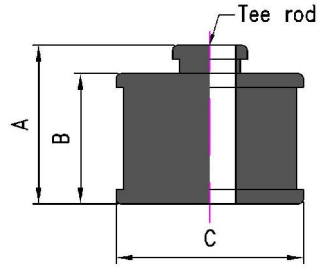


Hudetech

VIBRATION ISOLATION PRODUCT

RUBBER MOUNT-RMA 030



Design feature:

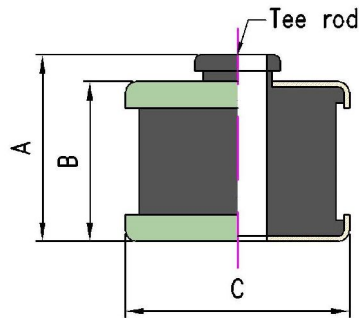
- Use neoprene element.
- Saving space installation.

Application:

- Duct, Piping, Suspended Ceiling, Fan, FCU, etc...

Model	Capacity	Deflection	Rod size	Dimension mm		
	kgs	mm	mm	A	B	C
RM 030	0-30	4	10	27	19	32

RUBBER MOUNT-RMA 060



Design feature:

- Use neoprene element.
- Saving space installation.

Application:

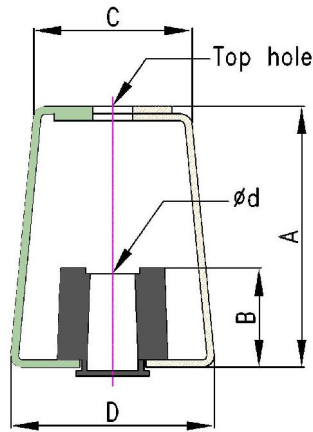
- Duct, Piping, Suspended Ceiling, Fan, FCU, etc...

Model	Capacity	Deflection	Rod size	Dimension mm		
	kgs	mm	mm	A	B	C
RM 060	31-60	4	10	34	25	42

Noted:

- Dimension is mentioned with 5% tolerance.
- To achieve good isolation do not overload.

RUBBER HANGER - TYPE A



Design feature:

- Use neoprene element with steel frame.
- Saving space installation.

Application:

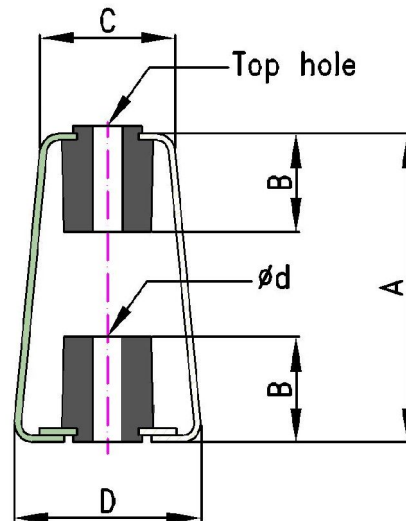
- Duct, Piping, Suspended Ceiling, Fan, FCU, etc...

Model	Color code	Capacity	Max. deflection	Top hole	Dimension mm				
					A	B	C	D	Ød
RHA 070	Black	0-70	6	12	80	33	28	40	12
RHA 120	Black	70-120	6	14	100	40	35	55	11
RHA 50	Black	0-50	6	20	132	54	62	83	20
RHA 100	Grey	50-100	12						
RHA 125	Orange	100-125	8						
RHA 150	White	125-150	6						
RHA 200	Black	150-200	6	22	142	54	86	110	24
RHA 300	Grey	200-300	8						
RHA 400	Orange	300-400	10						
RHA 500	Black	400-500	8	24	155	55	118	143	24
RHA 600	Grey	500-600	10						
RHA 800	Orange	600-800	12						
RHA 1000	White	800-1,000	10						
RHA 1250	Red	1,000-1,250	10						
RHA 1500	Blue	1,250-1500	10						

Noted:

- Dimension is mentioned with 5% tolerance.
- To achieve good isolation do not overload.

RUBBER HANGER - TYPE D



Design feature:

- Use neoprene element with steel frame.
- Saving space installation.

Application:

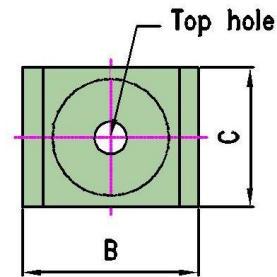
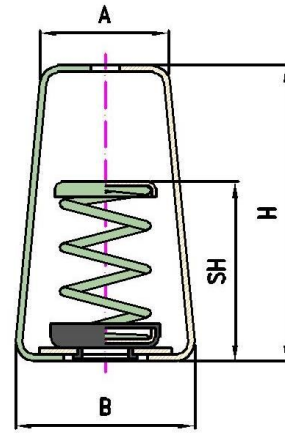
- Duct, Piping, Suspended Ceiling, Fan, FCU, etc....

Model	Color code	Capacity	Max. deflection	Top hole	Dimension mm				
					A	B	C	D	Ød
RHD 025	Grey	0-70	12	11	80	33	40	50	11
RHD 050	Orange	70-120	12						
RHD 070	Black		12						
RHD 100	Grey		12	12	135	40	59	82	12
RHD 120	Black		12						
RHD 150	Orange		12						

Noted:

- Dimension is mentioned with 5% tolerance.
- To achieve good isolation do not overload.

SPRING HANGER



Design feature:

- High efficiency vibration from structure born vibration and noise.

Application:

- Fan, AHU, FCU, Piping, Ducting, etc...

Feature:

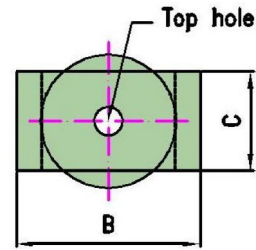
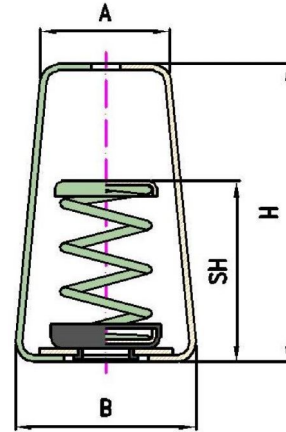
- Compliance-Springs designed according to BS 1726 (Part 1): 2002

Model	Color	Capacity	Deflection	Top Hole	Dimension mm				
		kgs	mm	mm	A	B	C	D	H
SH 10	Purple	10	25	13	55	70	52	12	115
SH 15	Yellow	15	25	13	55	70	52	12	115
SH 20	Grey	20	25	13	55	70	52	12	115
SH 40	Light Blue	40	25	13	55	70	52	12	115
SH 60	Blue	60	25	13	55	70	52	12	115
SH 100	Green	100	25	15	83	85	85	14	125
SH 160	Orange	160	25	15	83	85	85	14	125
SH 200	Red	200	25	15	83	85	85	14	125
SH 250	Purple	250	25	15	83	85	85	14	125
SH 160S	Orange	160	25	15	102	105	95	18	165
SH 200S	Red	200	25	15	102	105	95	18	165
SH 250S	Purple	250	25	15	102	105	95	18	165
SH 300	Grey	300	25	19	102	105	95	18	165
SH 400	Red	400	25	19	102	105	95	18	165
SH 500	Brown	500	25	19	102	105	95	18	165
SH 600	Black	600	25	19	102	105	95	18	165
SH 800	Red	800	25	19	102	105	95	18	165
SH 1250	Green	1250	25	19	102	105	95	18	165

Noted:

- Dimension is mentioned with 5% tolerance.
- To achieve good isolation do not overload.

SPRING HANGER—TYPE B



Design feature:

- High efficiency vibration from structure born vibration and noise.

Application:

- Fan, AHU, FCU, Piping, Ducting, etc...

Feature:

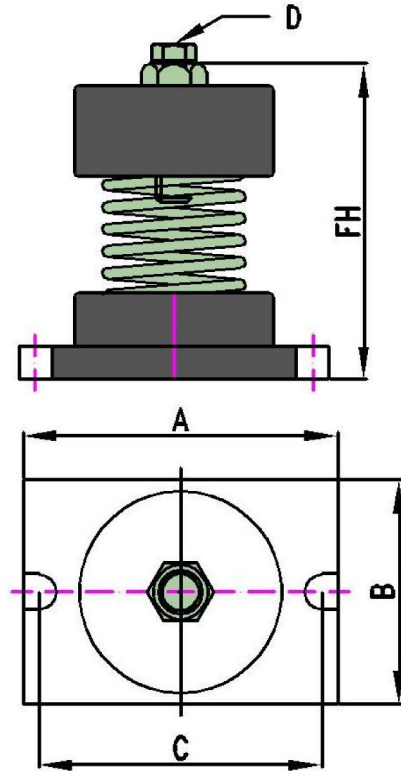
- Compliance-Springs designed according to BS 1726 (Part 1): 2002

Model	Color	Capacity	Deflection	Top Hole	Dimension mm				
		kgs	mm	mm	A	B	C	D	H
SHB 10	Purple	10	25	13	60	85	44	12	135
SHB15	Yellow	15	25	13	60	85	44	12	135
SHB 20	Grey	20	25	13	60	85	44	12	135
SHB 40	Light Blue	40	25	13	60	85	44	12	135
SHB 60	Blue	60	25	13	60	85	44	12	135
SHB 100	Green	100	25	15	80	110	60	14	175
SHB 160	Orange	160	25	15	80	110	60	14	175
SHB 200	Red	200	25	15	80	110	60	14	175
SHB 250	Purple	250	25	15	80	110	60	14	175
SHB 160S	Orange	160	25	19	88	120	70	18	210
SHB 200S	Red	200	25	19	88	120	70	18	210
SHB 250S	Purple	250	25	19	88	120	70	18	210
SHB 300	Grey	300	25	19	88	120	70	18	210
SHB 400	Red	400	25	19	88	120	70	18	210
SHB 500	Brown	500	25	19	88	120	70	18	210
SHB 600	Black	600	25	19	88	120	70	18	210
SHB 800	Red	800	25	19	88	120	70	18	210
SHB 1050	White	1050	25	19	88	120	70	18	210
SHB 1250	Green	1250	25	19	88	120	70	18	210

Noted:

- Dimension is mentioned with 5% tolerance.
- To achieve good isolation do not overload.

CUP SPRING MOUNT - TYPE A



Design feature:

- Laterally stable springs
- Non-Skid bolt down base.
- Plated leveling/lock bolt.

Application:

- AHU, Pump, Centrifugal and Axial Fan, Inertia Base, Internal Combustion Engines, etc...

Feature:

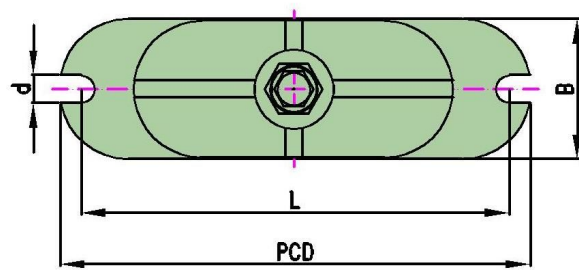
- Compliance-Springs designed according to BS 1726 (Part 1): 2002

Model	Color	Capacity	Deflection	Dimension mm					
		kgs	mm	A	B	C	D	d	FH
SMA 015	Purple	15	25	110	75	90	M8	M8	140
SMA 030	Yellow	30	25	110	75	90	M8	M8	140
SMA 060	Blue	60	25	110	75	90	M8	M8	140
SMA 100	Green	100	25	110	75	90	M8	M8	140
SMA 160	Orange	160	25	110	75	90	M8	M8	140
SMA 200	Red	200	25	110	75	90	M8	M8	140
SMA 250	Purple	250	25	110	75	90	M8	M8	140
SMA 160S	Orange	160	25	140	100	115	M10	M10	140
SMA 200S	Red	200	25	140	100	115	M10	M10	140
SMA 250S	Purple	250	25	140	100	115	M10	M10	140
SMA 300	Grey	300	25	140	100	115	M10	M10	140
SMA 400	Red	400	25	140	100	115	M10	M10	140
SMA 500	Brown	500	25	140	100	115	M10	M10	140
SMA 600	Black	600	25	140	100	115	M10	M10	140
SMA 800	Red	800	25	140	100	115	M10	M10	140
SMA 1050	White	1050	25	140	100	115	M10	M10	140
SMA 1250	Green	1250	25	140	100	115	M10	M10	140

Noted:

- Dimension is mentioned with 5% tolerance.
- To achieve good isolation do not overload.

CASED SPRING MOUNT - TYPE C

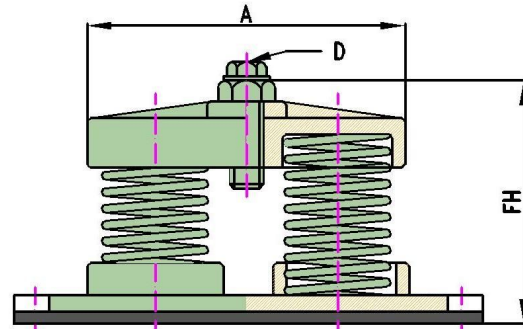


Design feature:

- Laterally stable springs
- Non-Skid bolt down base.
- Plated leveling/lock bolt.

Application:

- AHU, Pump, Centrifugal and Axial Fan, Inertia Base, Internal Combustion Engines, etc...



Feature:

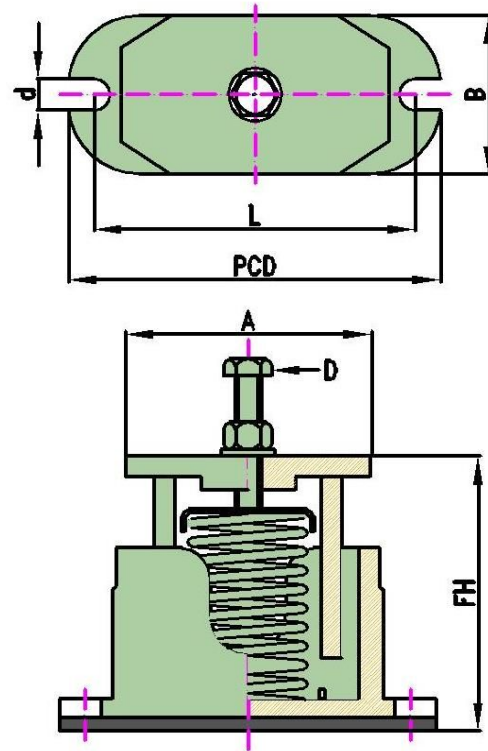
- Compliance-Springs designed according to BS 1726 (Part 1): 2002

Model	Color	Capacity	Deflection	Dimension mm						
		kgs	mm	A	B	L	PCD	D	d	FH
SMC II 320S	Orange	600	25	210	85	265	285	M16	M14	135
SMC II 400S	Red	800	25	210	85	265	285	M16	M14	135
SMC II 500S	Purple	1000	25	210	85	265	285	M16	M14	135
SMC II 600	Grey	600	25	210	85	265	285	M16	M14	135
SMC II 800	Red	800	25	210	85	265	285	M16	M14	135
SMC II 1000	Brown	1000	25	210	85	265	285	M16	M14	135
SMC II 1200	Black	1200	25	210	85	265	285	M16	M14	135
SMC II 1600	Red	1600	25	210	85	265	285	M16	M14	135
SMC II 2100	White	2100	25	210	85	265	285	M16	M14	135
SMC II 2500	Green	2500	25	210	85	265	285	M16	M14	135
SMC II 3000	Orange	3000	25	210	85	265	285	M16	M14	135
SMC II 4200	Red	4200	25	210	85	265	285	M16	M14	135

Noted:

- Dimension is mentioned with 5% tolerance.
- To achieve good isolation do not overload.

CASED SPRING MOUNT - TYPE A



Design feature:

- High efficiency vibration with spring and acoustic Friction pad.

Application:

- Chiller, Pump, Fan, Condensing Unit, Rooftop Package Unit, Compressor, Generator, etc...

Feature:

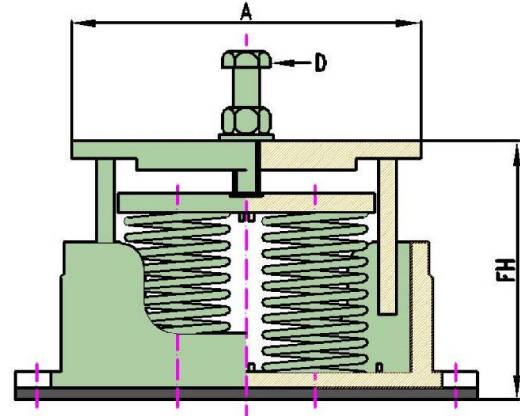
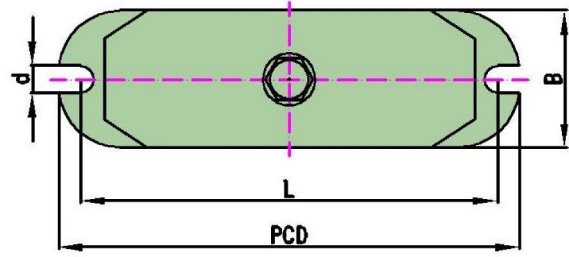
- Compliance-Springs designed according to BS 1726 (Part 1): 2002

Model	Color	Capacity	Deflection	Dimension mm						
		kgs	mm	A	B	L	PCD	D	d	FH
SMCA 030	Orange	30	25	100	70	147	162	M16	M14	116
SMCA 060	Blue	60	25	100	70	147	162	M16	M14	116
SMCA 100	Green	100	25	100	70	147	162	M16	M14	116
SMCA 160	Orange	160	25	100	70	147	162	M16	M14	116
SMCA 200	Red	200	25	100	70	147	162	M16	M14	116
SMCA 250	Purple	250	25	100	70	147	162	M16	M14	116
SMCA 160S	Orange	160	25	100	70	147	162	M16	M14	116
SMCA 200S	Red	200	25	100	70	147	162	M16	M14	116
SMCA 250S	Purple	250	25	100	70	147	162	M16	M14	116
SMCA 300	Grey	300	25	127	85	180	200	M16	M14	130
SMCA 400	Red	400	25	127	85	180	200	M16	M14	130
SMCA 500	Brown	500	25	127	85	180	200	M16	M14	130
SMCA 600	Black	600	25	127	85	180	200	M16	M14	130
SMCA 800	Red	800	25	127	85	180	200	M16	M14	130
SMCA 1050	White	1050	25	127	85	180	200	M16	M14	130
SMCA 1250	Green	1250	25	127	85	180	200	M16	M14	130

Noted:

- Dimension is mentioned with 5% tolerance.
- To achieve good isolation do not overload.

CASED SPRING MOUNT - TYPE A



Design feature:

- High efficiency vibration with spring and acoustic Friction pad.

Application:

- Chiller, Pump, Fan, Condensing Unit, Rooftop Package Unit, Compressor, DG Set, etc...

Feature:

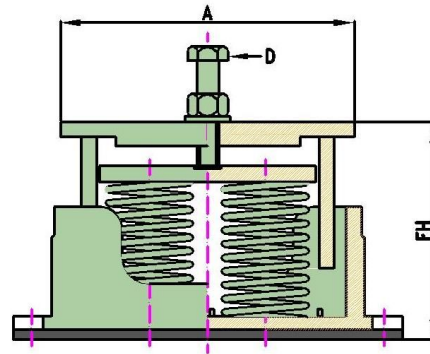
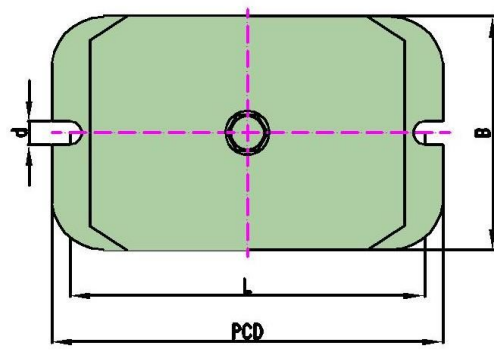
- Compliance-Springs designed according to BS 1726 (Part 1): 2002

Model	Color	Capacity kgs	Deflection mm	Dimension mm						
				A	B	L	PCD	D	d	FH
SMCA II 320S	Orange	600	25	210	85	265	285	M16	M14	135
SMCA II 400S	Red	800	25	210	85	265	285	M16	M14	135
SMCA II 500S	Purple	1000	25	210	85	265	285	M16	M14	135
SMCA II 600	Grey	600	25	210	85	265	285	M16	M14	135
SMCA II 800	Red	800	25	210	85	265	285	M16	M14	135
SMCA II 1000	Brown	1000	25	210	85	265	285	M16	M14	135
SMCA II 1200	Black	1200	25	210	85	265	285	M16	M14	135
SMCA II 1600	Red	1600	25	210	85	265	285	M16	M14	135
SMCA II 2100	White	2100	25	210	85	265	285	M16	M14	135
SMCA II 2500	Green	2500	25	210	85	265	285	M16	M14	135
SMCA II 3000	Orange	3000	25	210	85	265	285	M16	M14	135
SMCA II 4200	Red	4200	25	210	85	265	285	M16	M14	135

Noted:

- Dimension is mentioned with 5% tolerance.
- To achieve good isolation do not overload.

CASED SPRING MOUNT - TYPE A



Design feature:

- High efficiency vibration with spring and acoustic Friction pad.

Application:

- Chiller, Pump, Fan, Condensing Unit, Rooftop Package Unit, Compressor, DG Set, etc...

Feature:

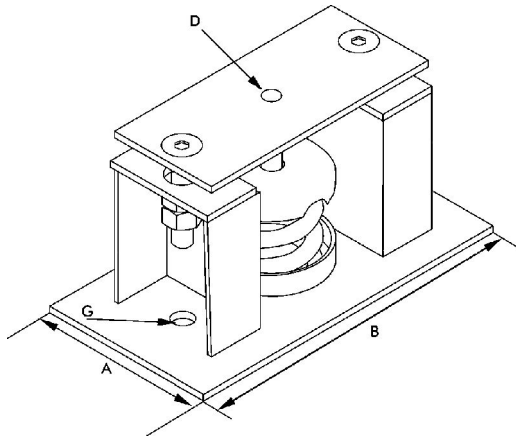
- Compliance-Springs designed according to BS 1726 (Part 1): 2002

Model	Color	Capacity kgs	Deflection mm	Dimension mm						
				A	B	L	PCD	D	d	FH
SMCA IV 640S	Orange	640	25	225	170	300	320	M20	M16	145
SMCA IV 800S	Red	800	25	225	170	300	320	M20	M16	145
SMCA IV 1000S	Purple	1000	25	225	170	300	320	M20	M16	145
SMCA IV 1200	Grey	1200	25	225	170	300	320	M20	M16	145
SMCA IV 1600	Red	1600	25	225	170	300	320	M20	M16	145
SMCA IV 2000	Black	2000	25	225	170	300	320	M20	M16	145
SMCA IV 2400	Red	2400	25	225	170	300	320	M20	M16	145
SMCA IV 3200	White	3200	25	225	170	300	320	M20	M16	145
SMCA IV 4200	Green	4200	25	225	170	300	320	M20	M16	145
SMCA IV 6000	Orange	6000	25	225	170	300	320	M20	M16	145

Noted:

- Dimension is mentioned with 5% tolerance.
- To achieve good isolation do not overload.

RESTRAINED SPRING ISOLATOR



Design feature:

- Free-standing mount.
- Limited vertical movement.

Application:

- - Chiller, Generator, Cooling Tower, etc...

Feature:

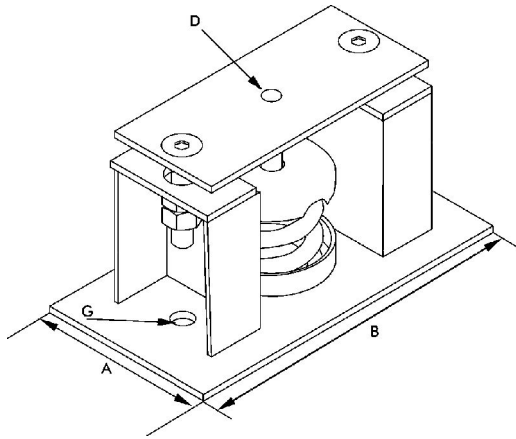
- Compliance-Springs designed according to BS 1726 (Part 1): 2002

Type	Model	Color	Capacity	Deflection	Dimension mm			
			kgs	mm	A	B	D	G
SINGLE SPRING	RSI 160S	Orange	160	25	100	200	14	16
	RSI 200S	Red	200	25	100	200	14	16
	RSI 250S	Purple	250	25	100	200	14	16
	RSI 300	Grey	300	25	100	200	14	16
	RSI 400	Red	400	25	100	200	14	16
	RSI 500	Brown	500	25	100	200	14	16
	RSI 600	Black	600	25	100	200	14	16
	RSI 800	Red	800	25	100	200	14	16
	RSI 1050	White	1050	25	100	200	14	16
	RSI 1500	Green	1500	25	100	200	14	16
RSI 2100	Red	2100	25	100	200	14	16	
DOUBLE SPRING	RSI II 320S	Orange	320	25	150	300	18	18
	RSI II 400S	Red	400	25	150	300	18	18
	RSI II 500s	Purple	500	25	150	300	18	18
	RSI II 600	Grey	600	25	150	300	18	18
	RSI II 800	Red	800	25	150	300	18	18
	RSI II 1000	Brown	1000	25	150	300	18	18
	RSI II 1200	Black	1200	25	150	300	18	18
	RSI II 1600	Red	1600	25	150	300	18	18
	RSI II 2100	White	2100	25	150	300	18	18
	RSI II 3000	Orange	3000	25	150	300	18	18
RSI II 4200	Red	4200	25	150	300	18	18	

Noted:

- Dimension is mentioned with 5% tolerance.
- To achieve good isolation do not overload.

RESTRAINED SPRING ISOLATOR



Design feature:

- Free-standing mount.
- Limited vertical movement.

Application:

- Chiller, Generator, Cooling Tower, etc...

Feature:

- Compliance-Springs designed according to BS 1726 (Part 1): 2002

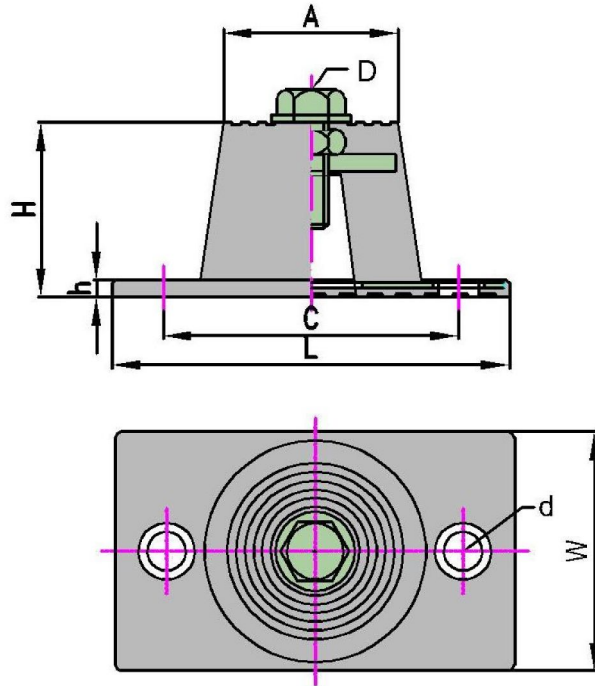
Type	Model	Color	Capacity	Deflection	Dimension mm			
			kgs	mm	A	B	D	G
FOUR SPRING	RSI IV 640S	Orange	640	25	225	300	18	18
	RSI IV 400S	Red	800	25	225	300	18	18
	RSI IV 1000S	Purple	1000	25	225	300	18	18
	RSI IV 1200	Grey	1200	25	225	300	18	18
	RSI IV 1600	Red	1600	25	225	300	18	18
	RSI IV 2000	Brown	2000	25	225	300	18	18
	RSI IV 2400	Black	2400	25	225	300	18	18
	RSI IV 3200	Red	3200	25	225	300	18	18
	RSI IV 4200	White	4200	25	225	300	18	18
	RSI IV 6000	Orange	6000	25	225	300	18	18

SIX SPRING	RSI VI 960S	Orange	960	25	250	350	18	18
	RSI VI 1200S	Red	1200	25	250	350	18	18
	RSI VI 1500S	Purple	1500	25	250	350	18	18
	RSI VI 1800	Grey	1800	25	250	350	18	18
	RSI VI 2400	Red	2400	25	250	350	18	18
	RSI VI 3000	Brown	3000	25	250	350	18	18
	RSI VI 3600	Black	3600	25	250	350	18	18
	RSI VI 4800	Red	4800	25	250	350	18	18
	RSI VI 6200	White	6200	25	250	350	18	18

Noted:

- Dimension is mentioned with 5% tolerance.
- To achieve good isolation do not overload.

RUBBER MOUNT-RMA



Design feature:

- Use neoprene element.
- Saving space installation.

Application:

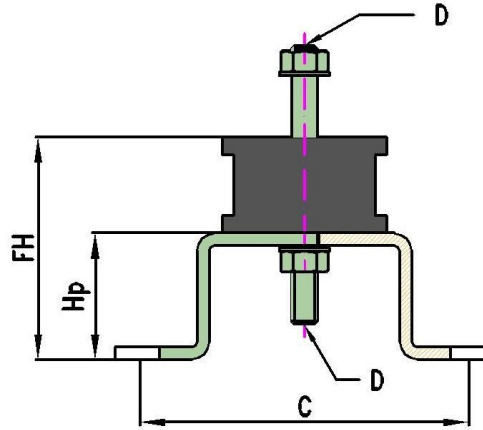
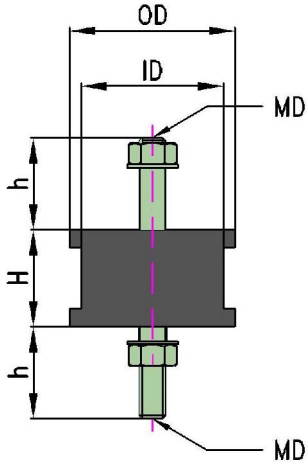
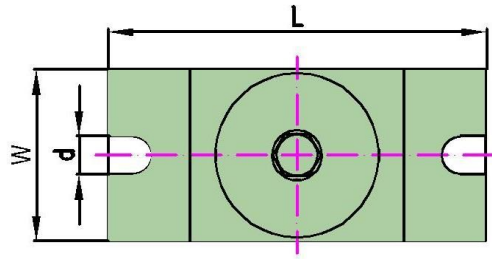
- Riser Pipe, AHU, Outdoor VRV Unit,
- Fan, Pump, Generator, etc...

Model	Capacity	Deflection	Dimension mm							
	kgs		mm	A	W	L	C	H	h	D
RMA 025	25	4	40	58	96	78	53	6	M10	M8
RMA 050	50	6								
RMA 100	100	8								
RMA 150	150	4								
RMA 200	200	6								
RMA 250	250	8								
RMA 300	300	5	62	84	140	104	62	6	M12	M12
RMA 400	400	10								
RMA 500	500	15								
RMA 600	600	5								
RMA 800	800	10								
RMA 100	1,000	15								

Noted:

- Dimension is mentioned with 5% tolerance.

RUBBER MOUNT-RMK



Design feature:

- Use neoprene element.
- Saving space installation.

Application:

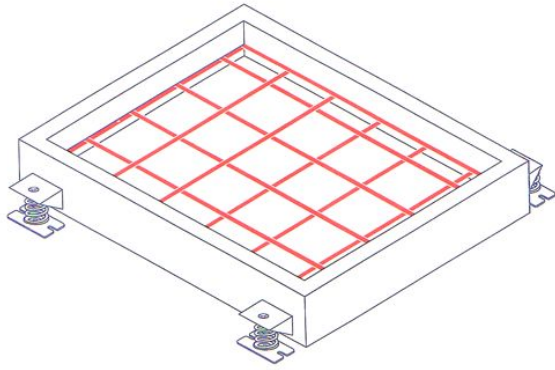
- Riser Pipe, AHU, Outdoor VRV Unit,
- Fan, Pump, Generator, etc...

Model	Capacity	Deflection	Dimension mm										
	kgs	mm	OD	ID	H	h	Hp	FH	Md	d	L	W	C
RMK 40	50-70	5	40	40	31	25	50	81	M8	M10	114	50	95
RMK 60	50-100	5	60	56	38	35	50	88	M8	M10	140	80	115
RMK 65	80-180	5	65	60	47	35	50	97	M8	M10	140	80	115
RMK 80	160-300	5	80	70	47	35	50	97	M10	M12	154	90	136
RMK 100	280-500	5	100	95	56	35	50	106	M12	M12	170	120	154
RMK 120	480-800	5	120	108	64	35	50	114	M14	M12	190	140	174

Noted:

- Dimension is mentioned with 5% tolerance.

INERTIA BASE



Design feature:

- Construction included frame steel and concrete plinth.
- Mounting selection base on 4 or 6 mount points

Application:

- Pump, Generator, large centrifugal fan, industrial washing machine, rotating mechanical equipment, etc...

Model	Thickness	Dimension mm			
	mm	Wide	Length	Height	Mount Point
IB 150	150	Customizer	Customizer	150	4/6
IB 200	200	Customizer	Customizer	200	4/6
IB 300	300	Customizer	Customizer	300	4/6
IB 400	400	Customizer	Customizer	400	4/6
IB 500	500	Customizer	Customizer	500	4/6

Noted:

- Dimension is mentioned with 5% tolerance.
- To achieve good isolation do not overload.

RUBBER PAD - TYPE A



Design feature:

- Alternate high/low ribbed construction
- Easy to cut pad.
- Optional:
 - + Oil resistance: ASTM D 471-06.
 - + Fire rate.
 - + ASTM F 1861.

Application:

- AHU, chiller, Cooling Tower, Generator, Compressor, etc...

Model	Capacity	Deflection	Dimension mm		
	Kg/cm2	mm	A	B	H
RPA 100X100X10	1.08	3	100	100	10
RPA 200X200X10	1.08	3	200	200	10
RPA 300X300X10	1.08	3	300	300	10
RPA 400X400X10	1.08	3	400	400	10
RPA 500X500X10	1.08	3	500	500	10
RPA 600X600X10	1.08	3	600	600	10
RPA 100X100X20	9.91	6	100	100	20
RPA 200X200X20	9.91	6	200	200	20
RPA 300X300X20	9.91	6	300	300	20
RPA 400X400X20	9.91	6	400	400	20
RPA 500X500X20	9.91	6	500	500	20
RPA 600X600X20	9.91	6	600	600	20
RPA 600X600X40	12.83	10	600	600	40
RPA 600X600X50	15.52	10	600	600	50
RPA 600X600X60	20.73	10	600	600	60

Noted:

- Dimension is mentioned with 5% tolerance.
- To achieve good isolation do not overload.

RUBBER PAD - TYPE B



Design feature:

- Alternate high/low ribbed construction
- Constructed of a steel plate bonded between Ribbed Anti Vibration Pad.
- Optional:
 - + Oil resistance: ASTM D 471-06.
 - + Fire rate.
 - + ASTM F 1861.

Application:

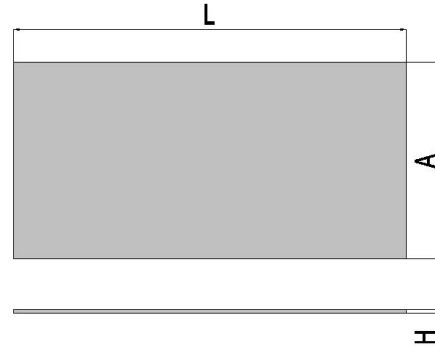
- AHU, chiller, Cooling Tower, Generator, Compressor, etc...

Model	Capacity	Deflection	Dimension mm		
	Kg/cm2	mm	A	B	H
RPB 100X100X20	2.16	6	100	100	20
RPB 200X200X20	2.16	6	200	200	20
RPB 300X300X20	2.16	6	300	300	20
RPB 400X400X20	2.16	6	400	400	20
RPB 500X500X20	2.16	6	500	500	20
RPB 600X600X20	2.16	6	600	600	20
RPB 600X600X40	19.82	12	600	600	40
RPB 600X600X60	19.82	18	600	600	60

Noted:

- Dimension is mentioned with 5% tolerance.
- To achieve good isolation do not overload.

RUBBER PAD - TYPE C



Design feature:

- Alternate high/low ribbed construction
- Easy to cut pad.

Application:

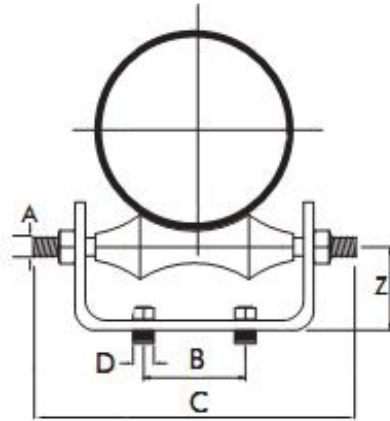
- AHU, chiller, Cooling Tower, Generator,

Model	Capacity	Deflection	Dimension mm			
	Kg/cm2	mm	A	B	H	L
RPC 100XLX10	35.08	3	100	100	10	100-10,000
RPC 200XLX10	35.08	3	200	200	10	100-10,000
RPC 300XLX10	35.08	3	300	300	10	100-10,000
RPC 400XLX10	35.08	3	400	400	10	100-10,000
RPC 500XLX10	35.08	3	500	500	10	100-10,000
RPC 500XLX10	35.08	3	500	500	10	100-10,000
RPC 100X100X15	35.08	4	100	100	15	100-10,000
RPC 200X200X15	35.08	4	200	200	15	100-10,000
RPC 300X300X15	35.08	4	300	300	15	100-10,000
RPC 400X400X15	35.08	4	400	400	15	100-10,000
RPC 500X500X15	35.08	4	500	500	15	100-10,000

Noted:

- Dimension is mentioned with 5% tolerance.
- To achieve good isolation do not overload.

ROLLER CHAIR



Design feature:

- Roller- Cast: iron/Carbon Steel
- Chair: Carbon Steel with zinc coast.
- Tie: Carbon Steel with MS Nut & Bolt

Application:

- Support to pipes where axial movements are allowed , vertical adjustments are required

Feature:

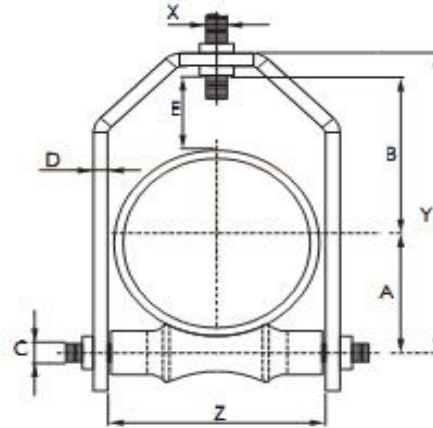
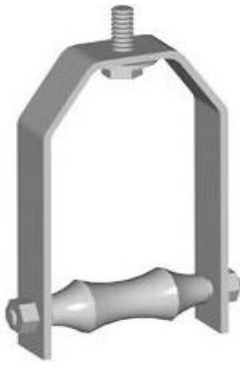
- Designed according to MSS SP-69

Model	Size	Dimension mm						Max. Load Kg
		A	B	C	D	Frame Size	Z	
RLC 060	2"	12	35	110	12	6x32	40	350
RLC 075	2 1/2"	12	35	110	12	6x32	40	350
RLC 090	3"	12	50	145	12	6x32	45	350
RLC 100	3 1/2"	12	50	145	12	6x32	45	500
RLC 115	4"	12	50	180	16	8x40	50	500
RLC 140	5"	12	75	215	16	8x40	55	500
RLC 168	6"	19	80	250	19	8x40	60	500
RLC 220	8"	22	85	285	19	10x50	75	1200
RLC 273	10"	22	130	345	19	10x50	90	1200
RLC 323	12"	25	140	395	25	12x50	105	1500
RLC 355	14"	25	165	440	25	12x50	120	1500
RLC 406	16"	32	210	480	25	12x75	140	3500
RLC 457	18"	32	235	525	25	12x75	155	3500
RLC 508	20"	50	260	555	25	12x75	165	3500
RLC 610	24"	50	310	665	25	16x100	200	3500

Noted:

- Dimension is mentioned with 5% tolerance.
- To achieve good isolation do not overload.

ROLLER CHAIR HANGER



Design feature:

- Roller- Cast: iron/Carbon Steel
- Chair: Carbon Steel with zinc coast.
- Tie: Carbon Steel with MS Nut & Bolt

Application:

- Support to pipes where axial movements are allowed , vertical adjustments are required

Feature:

- Designed according to MSS SP-69

Model	Size	Dimension mm							Max. Load Kg
		A	B	Bracket Size	E	X	Y	Z	
RLH 035	1"	28	43	3x25	32	10	90	46	100
RLH 042	1 1/4"	33	46	3x25	32	10	96	47	100
RLH 048	1 2/2"	38	50	3x25	32	10	107	62	100
RLH 060	2"	41	57	3x25	32	10	122	64	125
RLH 075	2 1/2"	50	74	3x25	44	12	148	92	150
RLH 090	3"	56	81	6x32	44	12	161	94	150
RLH 100	3 1/2"	65	88	6x32	45	12	180	110	190
RLH 115	4"	69	93	6x40	46	12	192	122	250
RLH 140	5"	88	114	6x50	50	12	233	152	300
RLH 168	6"	102	125	6x50	50	19	260	180	300
RLH 220	8"	131	152	10x65	50	22	326	230	475
RLH 273	10"	161	178	10x65	50	22	381	285	475
RLH 323	12"	192	208	12x65	55	22	440	335	550
RLH 355	14"	212	221	12x65	55	25	478	372	550
RLH 406	16"	233	247	12x65	55	25	524	421	585
RLH 457	18"	267	283	12x65	65	25	590	474	675
RLH 508	20"	300	305	16x75	65	32	664	522	725
RLH 610	24"	351	367	16x100	75	32	788	630	975

Noted:

- Dimension is mentioned with 5% tolerance.
- To achieve good isolation do not overload.

AUTHORIZED DISTRIBUTOR:
Huynh De Co., Ltd
Website: ww.huynhdevn.com
Email: hoanguyen@huynhdevn.com
Tel: (+84) 08 2220 9001